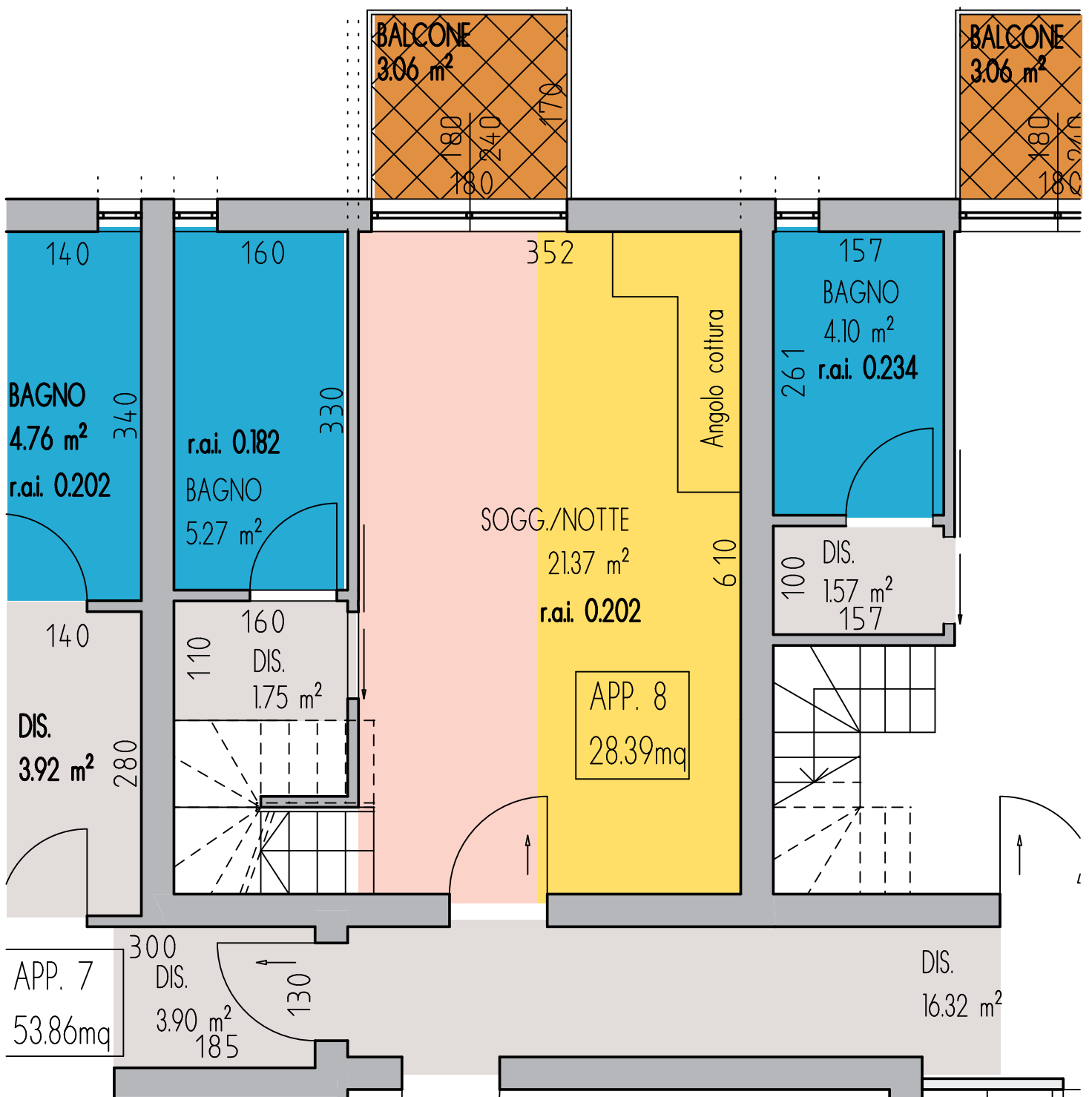
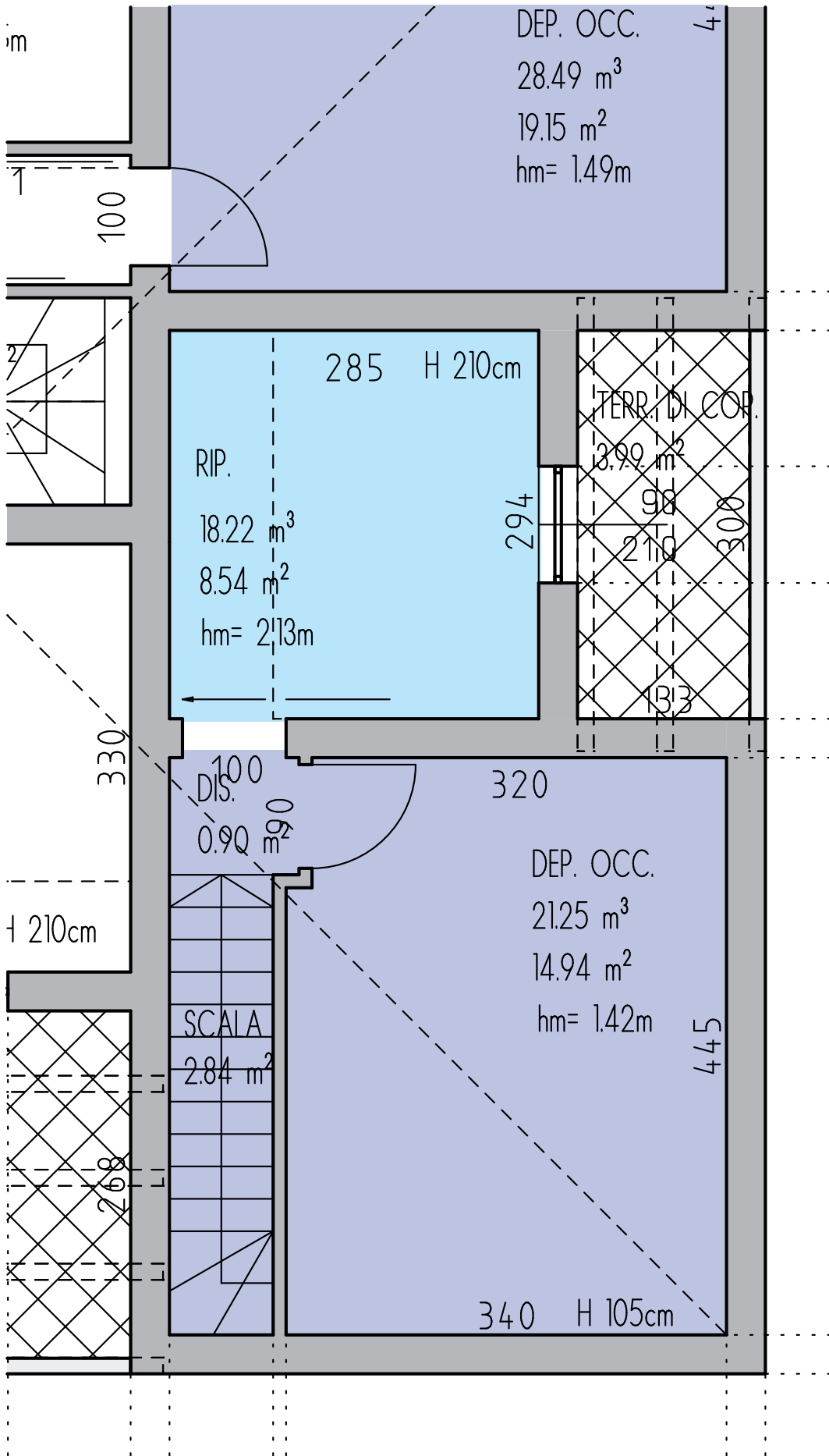
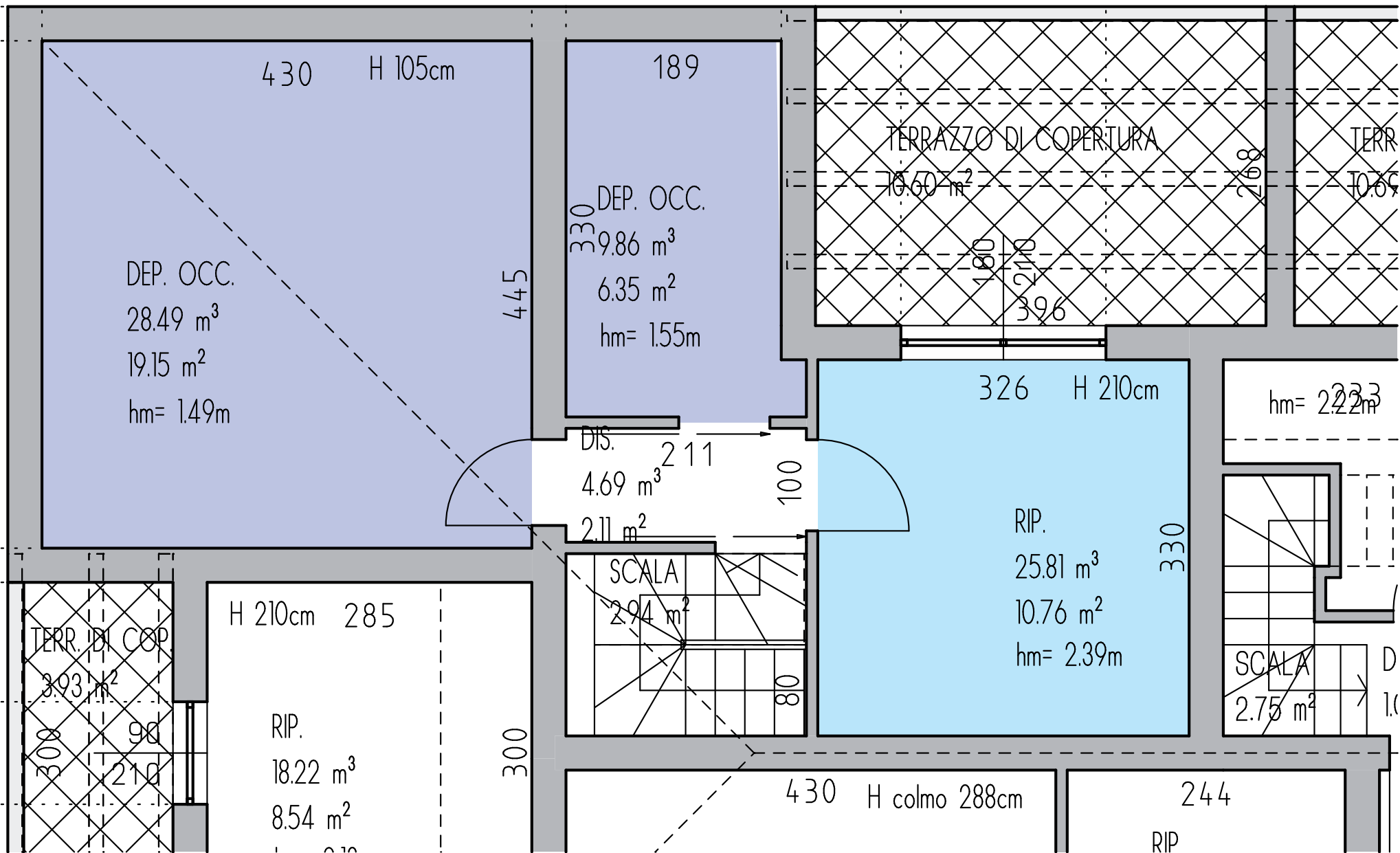


Piano Terra







430 H 105cm
 DEP. OCC.
 28.49 m³
 19.15 m²
 hm= 1.49m
 445

189
 DEP. OCC.
 9.86 m³
 6.35 m²
 hm= 1.55m
 330

TERRAZZO DI COPERTURA
 10.60 m²
 268
 160
 210
 396

TERR
 10.60 m²

326 H 210cm
 RIP.
 25.81 m³
 10.76 m²
 hm= 2.39m
 330

hm= 2.22m

DIS.
 4.69 m³
 2.11 m²
 211
 100

SCALA
 2.94 m²
 80

SCALA
 2.75 m²
 D
 1.0

TERR. DI COP.
 3.93 m²
 300
 90
 210

H 210cm 285
 RIP.
 18.22 m³
 8.54 m²
 300

430 H colmo 288cm

244
 RIP